

# REIT MANAGER



Share documents. Simply, securely.

ShareVault® REIT Manager is the category-defining tool for REIT administration. From private to public REITS, hundreds of customers rely on our platform.

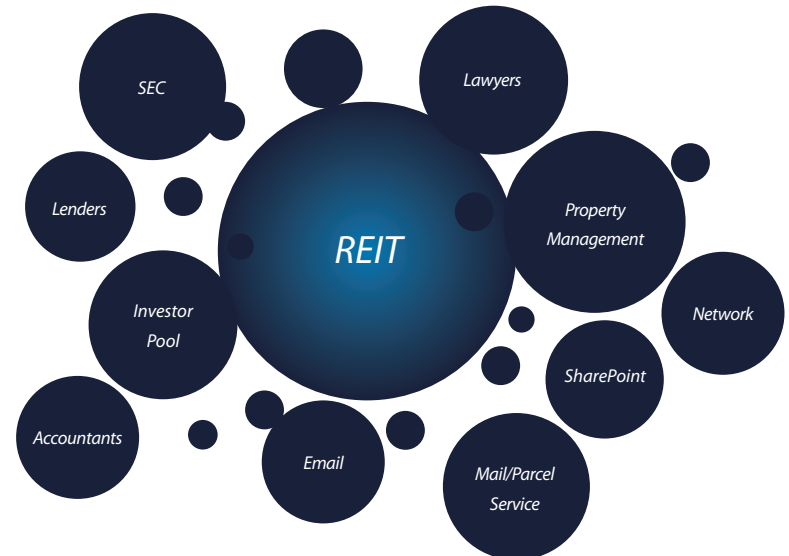
We help REIT administrators **solve** big challenges:

- **Fund Management** Centrally organize and share fund collateral, financials and diversification and disposition plans with investors, lenders, accountants and counsel.
- **Investor Communication** With 1-click instantly share all fund related documentation with hundreds of investors and immediately track investor interest.
- **Asset Disposition & Acquisition** Have asset documentation ready and waiting for the perfect opportunity to dispose or acquire in order to increase your value to your investors.
- **Property Management** Eliminate the confusion and mess associated with managing multiple properties by having your property managers upload all information directly to you, safely and securely in REIT Manager.

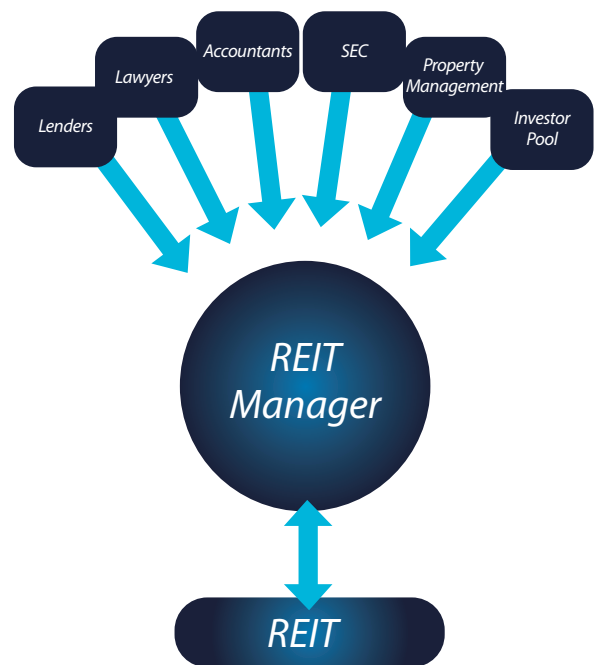
REIT Manager helps **streamline** your process workflow by:

- ➔ Offering a complete Cloud Solution that allows you to share documents with anyone from anywhere.
- ➔ Reducing overall administration cost by saving on individual emails and postage.
- ➔ Customized to your business to give you options for managing property management communications, property disposition/acquisition, sending offerings and prospectuses, communicate reports with investors, third parties and governing bodies.
- ➔ Being easy to deploy and use, requiring no additional burden from IT.

Typical REIT Process Workflow

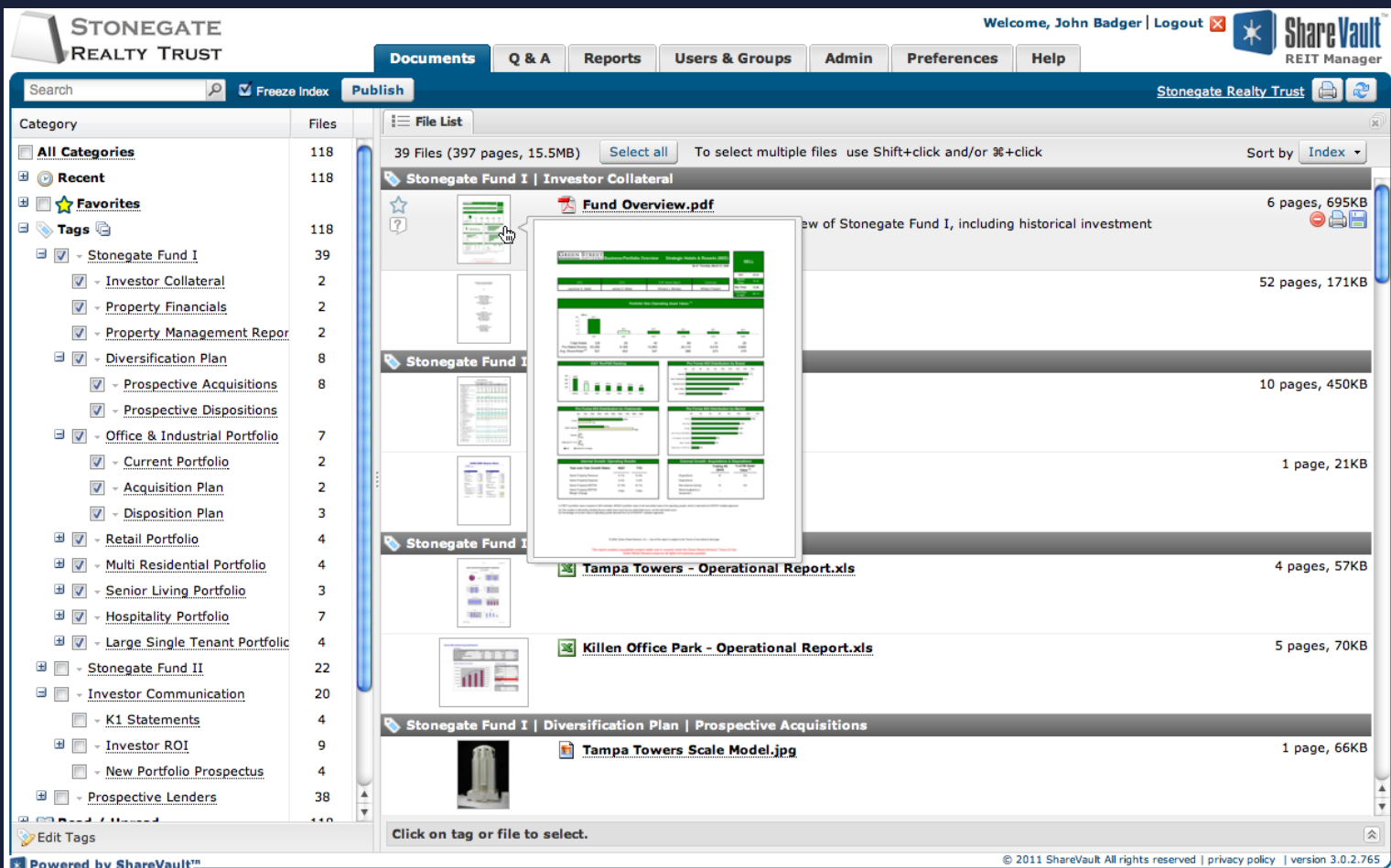


REIT Manager Process Workflow



“ Not only did REIT Manager solve my challenge of meeting quarterly investor reporting deadlines, but when I needed assistance at 2:30 AM the ShareVault Team was there to help. Great product with excellent service! ”

Christine Johnson, Director, Asset Management  
Elan Properties Inc.



REIT Manager gives you the power to control your entire process from one screen

## The ShareVault 4S Commitment

Speed ..... Security ..... Simplicity ..... Support .....

Our commitment to speed means that you can be up and running, sharing documents with investors and other parties in a matter of hours, not weeks.

Our commitment to security means that you can have the peace of mind that your data is encrypted both in transit and at rest.

Our commitment to simplicity means that all the parties can come into REIT Manager with no prior experience and click-and-view your materials.

Our commitment to support means that you and all your parties can call us whenever you need assistance, 24 hours a day, 7 days a week.